

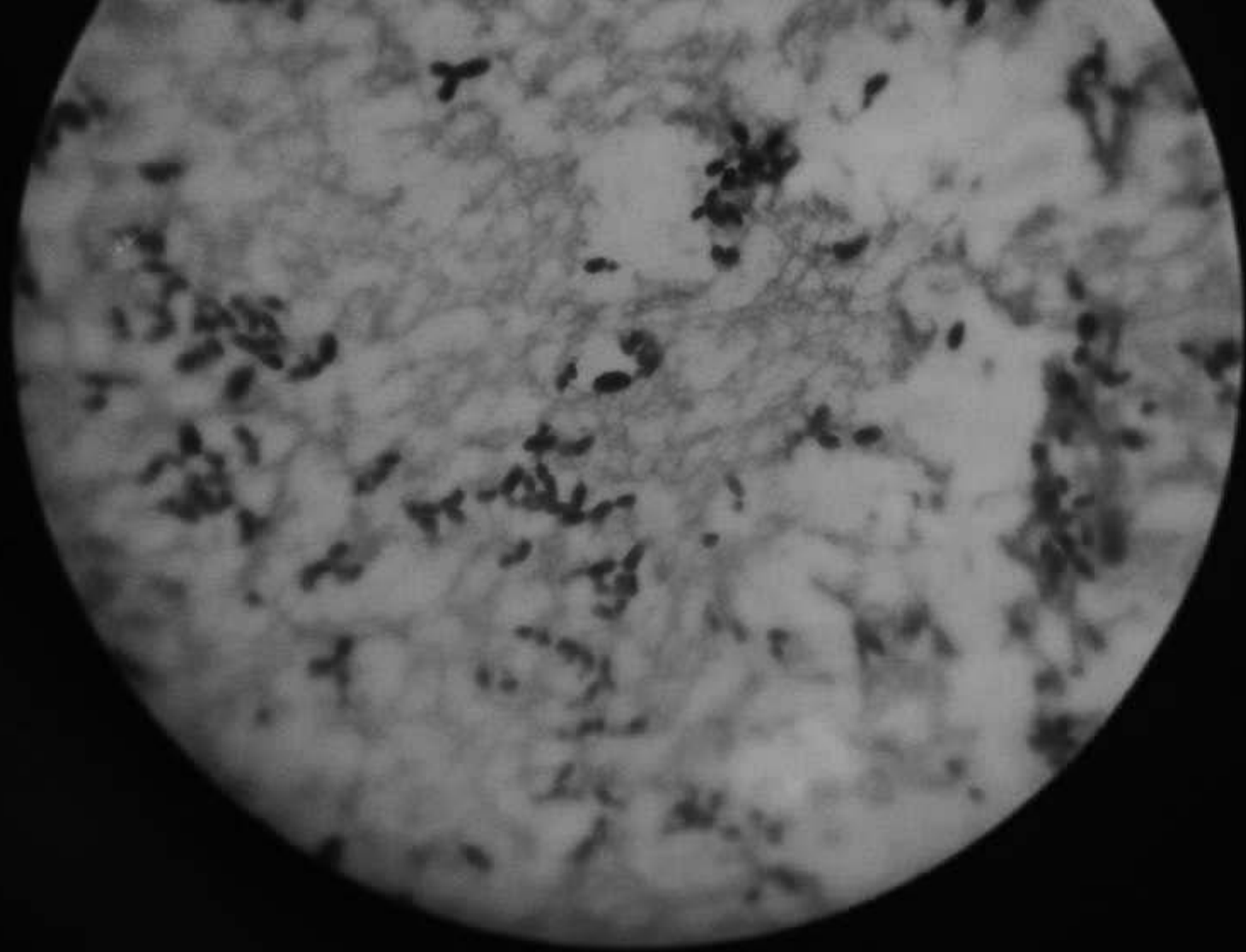
Microbiology lab
Respiratory System

Yeast

Gram stain \Rightarrow

Gram positive oval shape

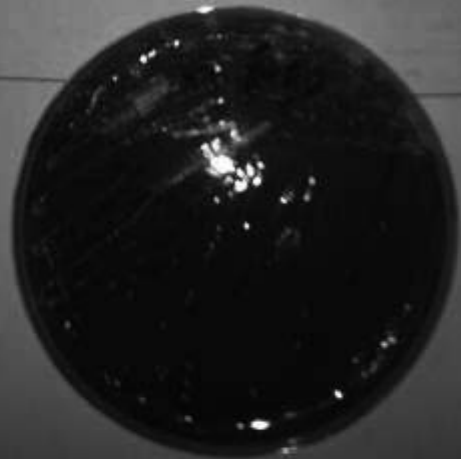




Staphylococcus albus

White Colonies on

CLED Agar Media





Staphylococcus aureus

on CLED Agar

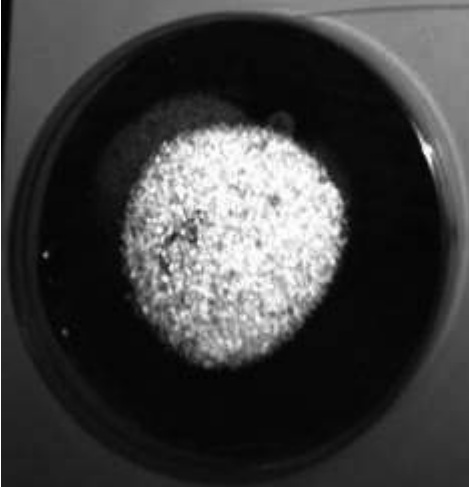
Media

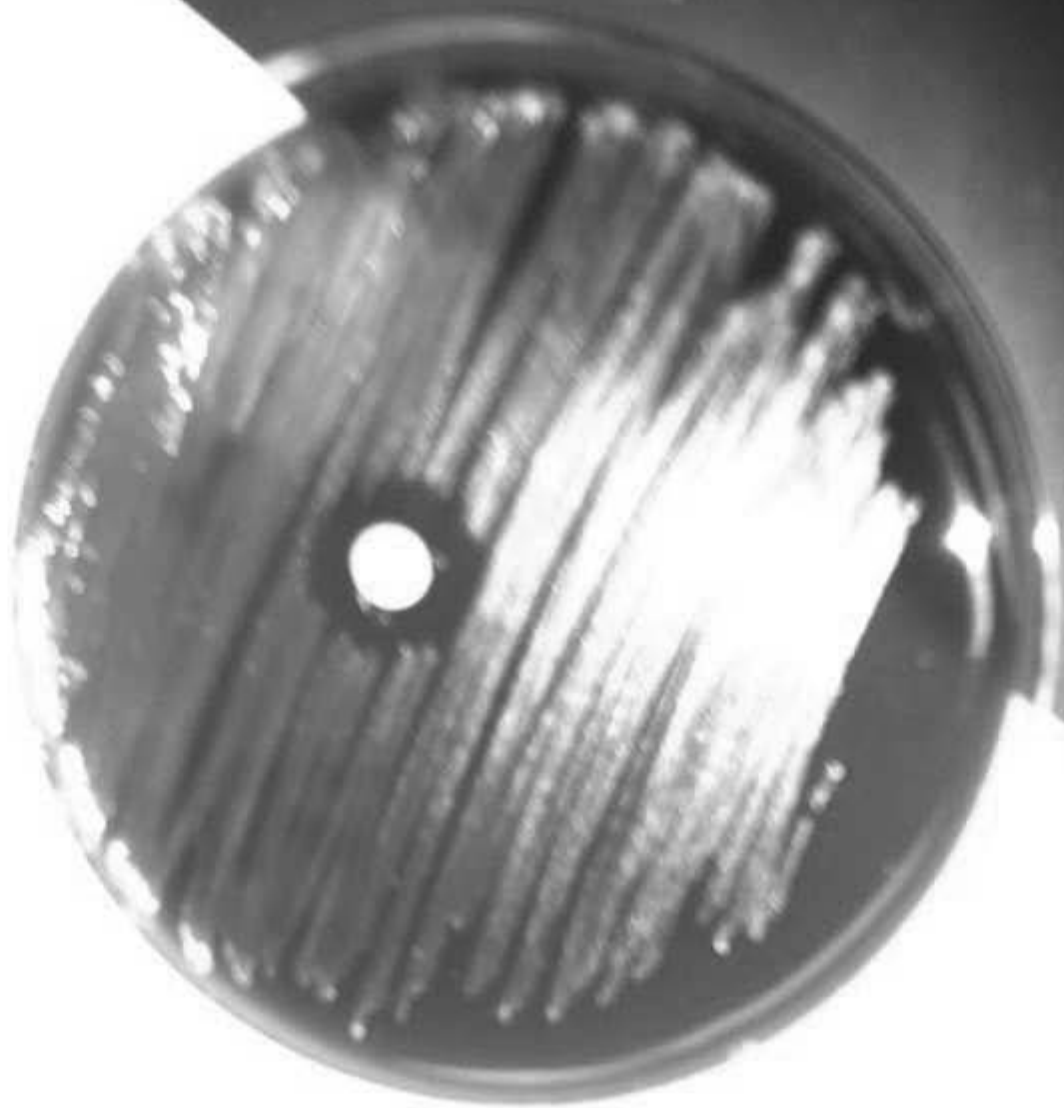


β -hemolytic Streptococci

Group A .

Bacitracin Sensitive

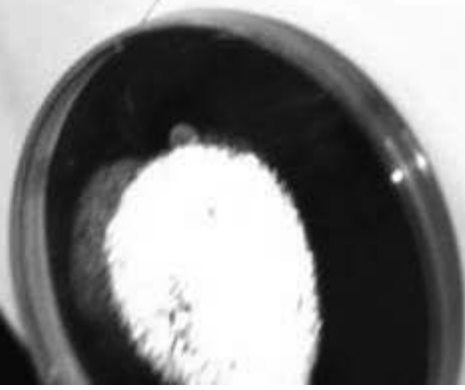




B. hemolyticus Streptococci

Group A

Bacitracin Sensitive



α - hemolytic Streptococci

Streptococcus pneumonia

on Blood Agar

Optochin Sensitive



ronia

Agar

tive -



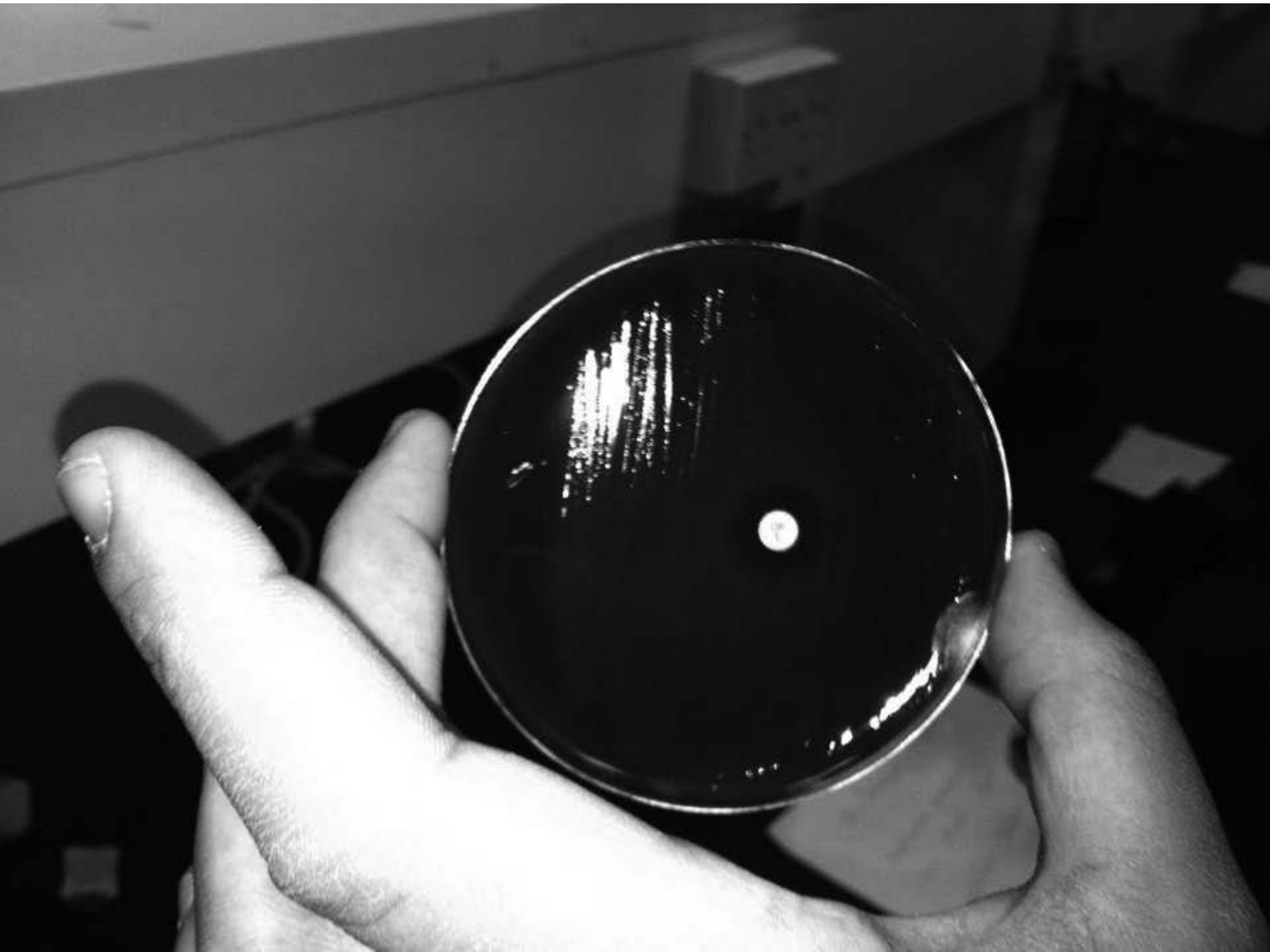
α - hemolysis

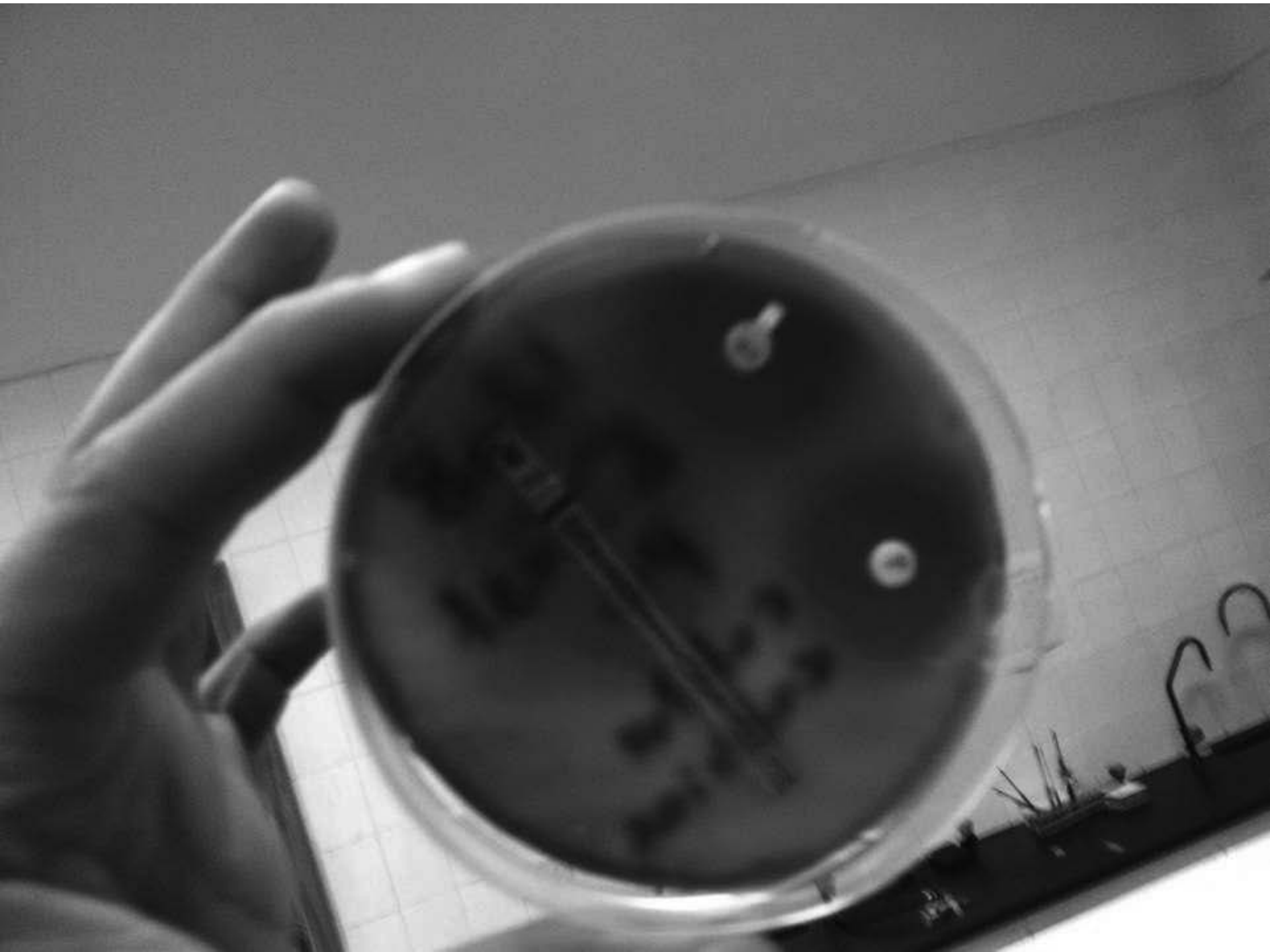
Viridans streptococci

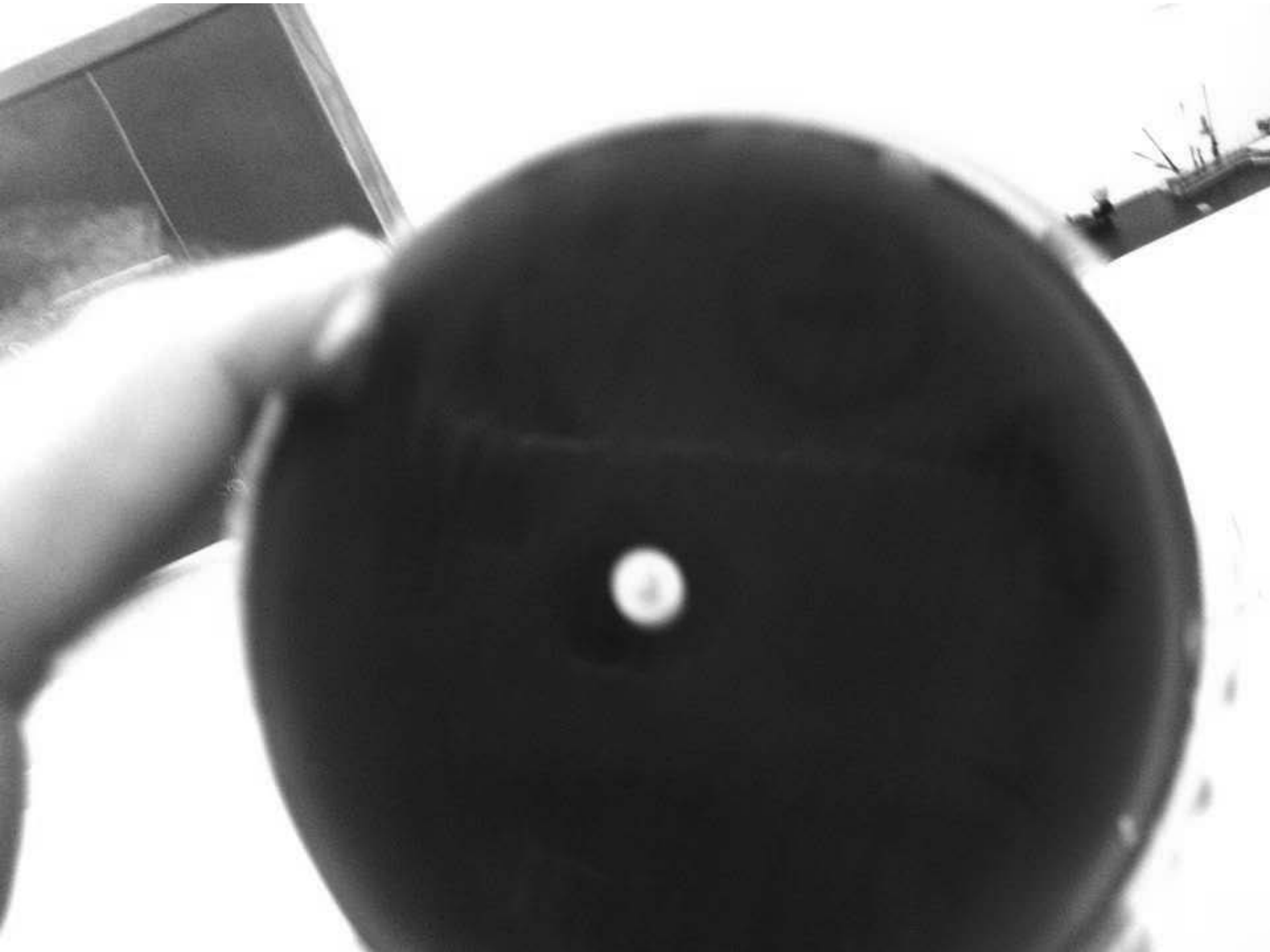
optochin Resistance

ON Blood Agar









Aspergillus niger

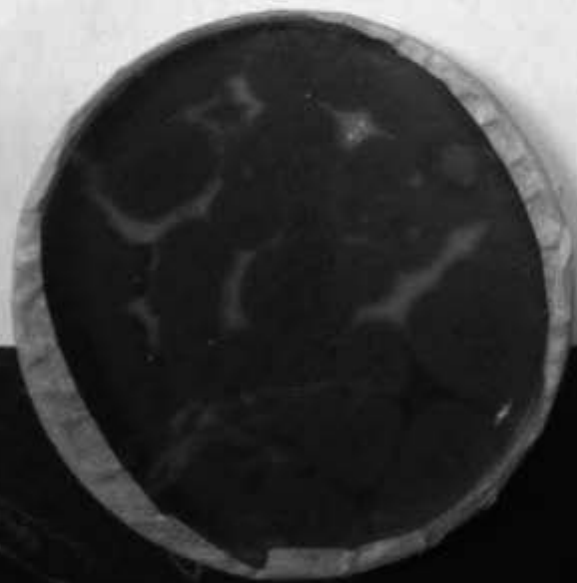
Black Colonies on
Sabaroud Dextrose Agar

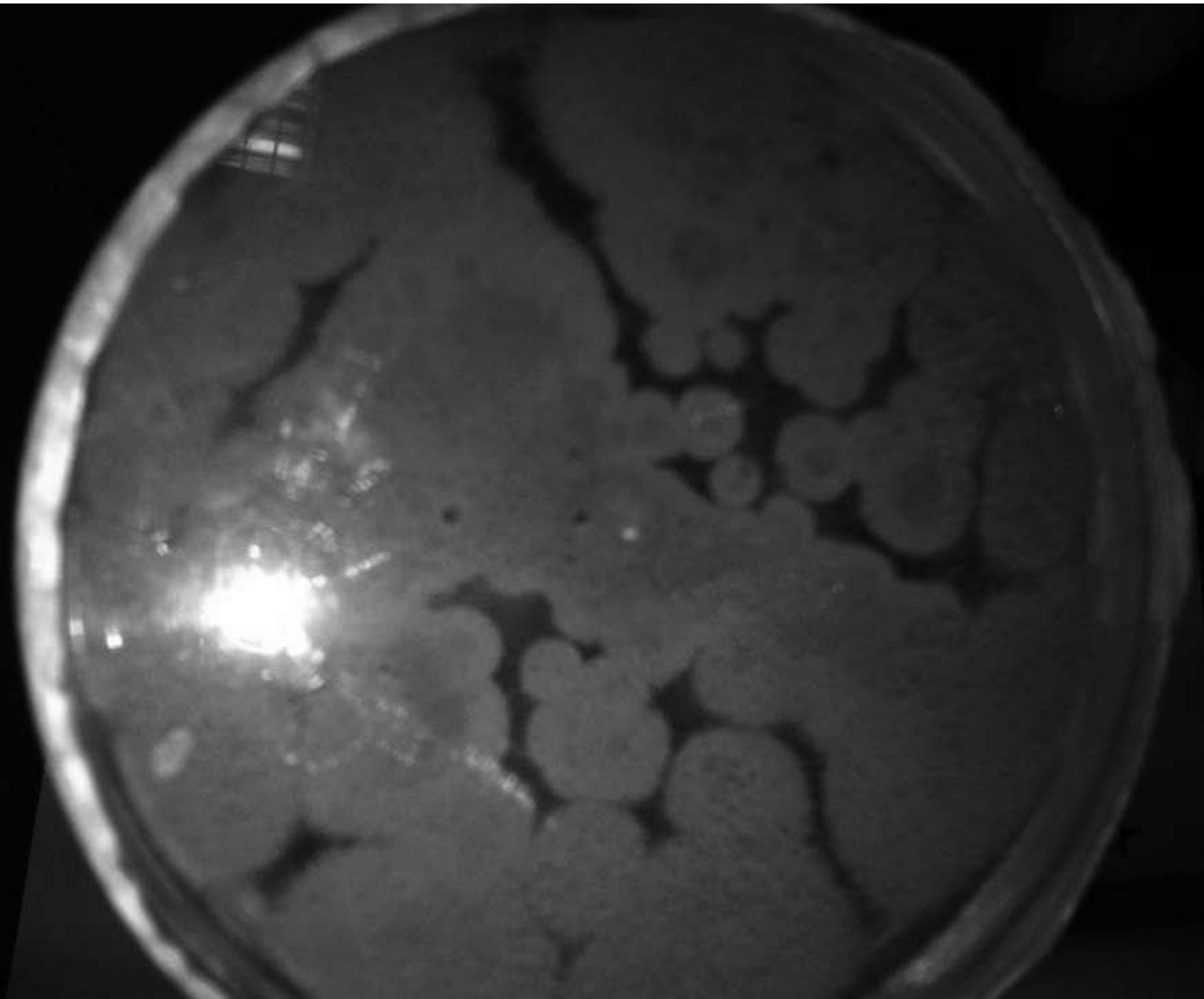


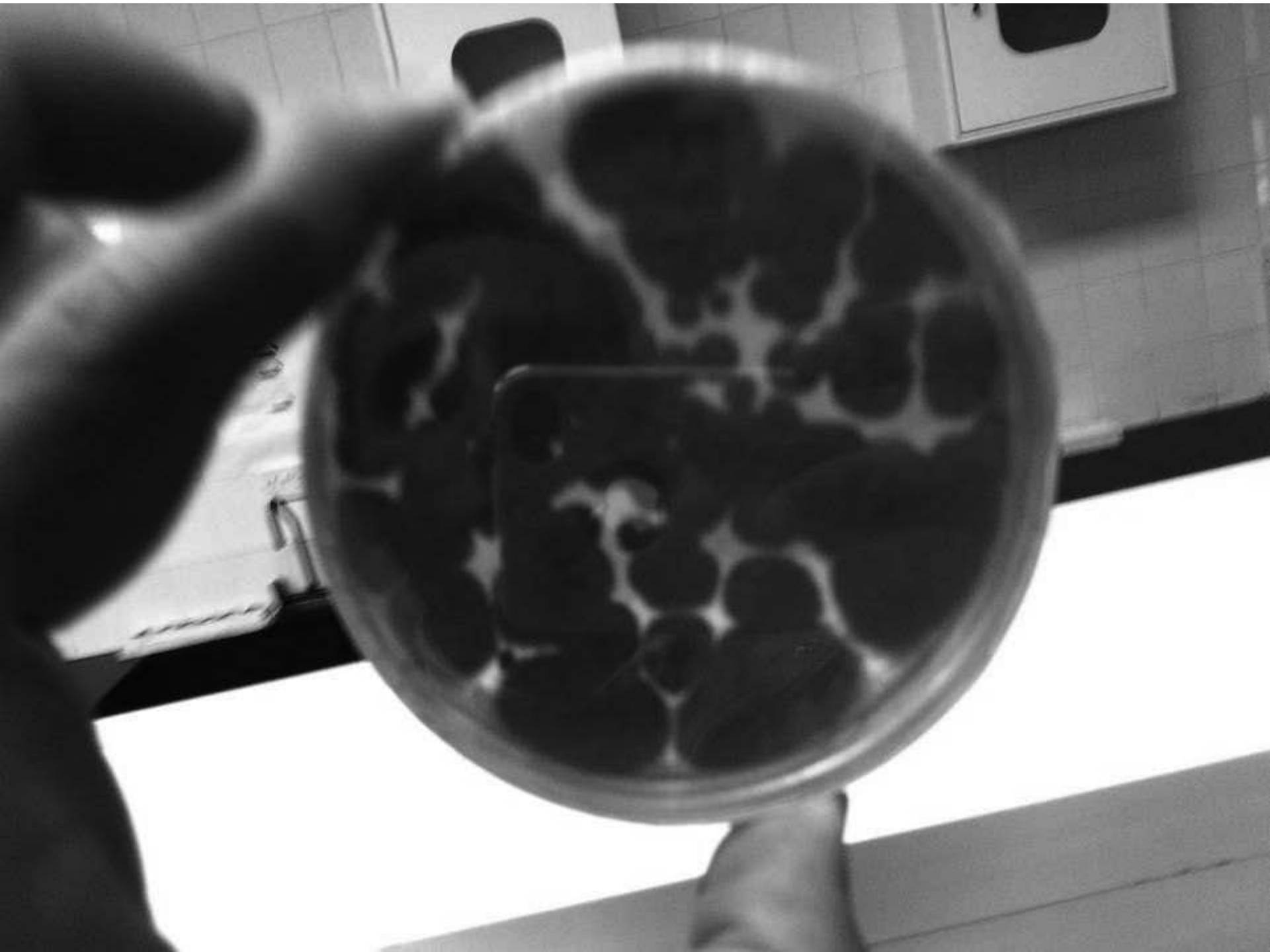
Penecillum A

Fungi, Blue colony on

Sabouraud Dextrose Agar







Candida

ON Chromagar Media :-

- ① Candida albicans : Green Colonies
- ② Candida tropicalis : Blue Colonies
- ③ Candida glabrata : pink Glossy Colonies
- ④ Candida krusei : Light pink dry Colonies





C. glabrata

C. albicans

C. Krusei

C. tropicalis

Candida species

ON Sabaroud Dextrose
Agar.

Creamy colonies

Candida

Sabouraud Dextrose

agar

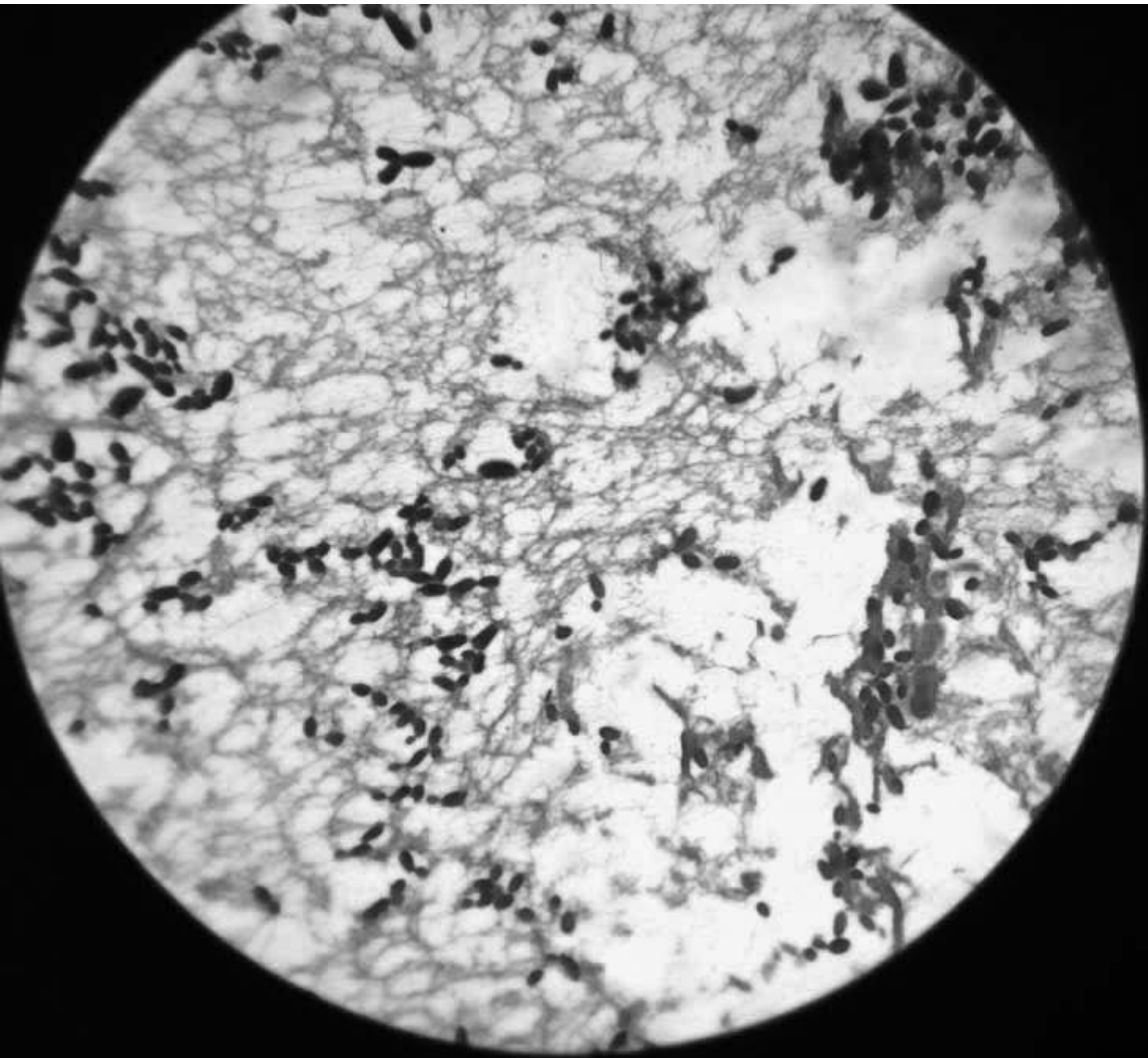


Yeast

Gram stain \Rightarrow

Gram positive oval shape







WET MOUNT

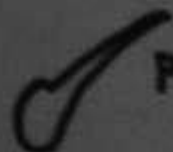
Candida albicans

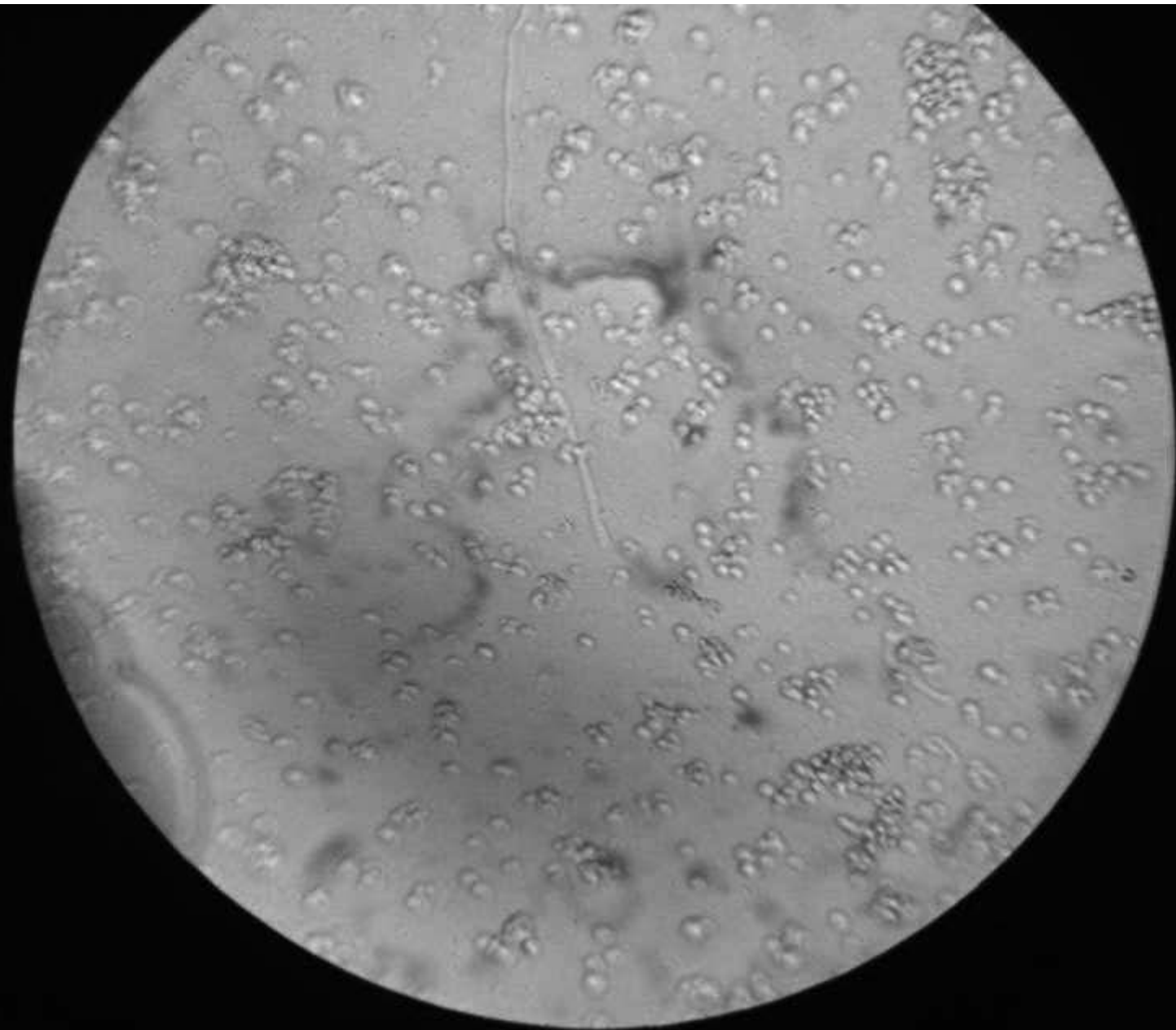
Germ-tube Test

 + Candida albicans $\xrightarrow[incubation]{4hr}$

wet Mount

 \uparrow germ tube +

 pseudohyphae



Candida albicans

Germ Tube Test

Colony + Serum $\xrightarrow[4\text{hrs}]{\text{incubate}}$

Candida

Pseudohyphae \rightarrow



Gram-Stain +

