

Microbiology lab  
Respiratory System

Yeast

Gram Stain  $\Rightarrow$

Gram positive oval shape



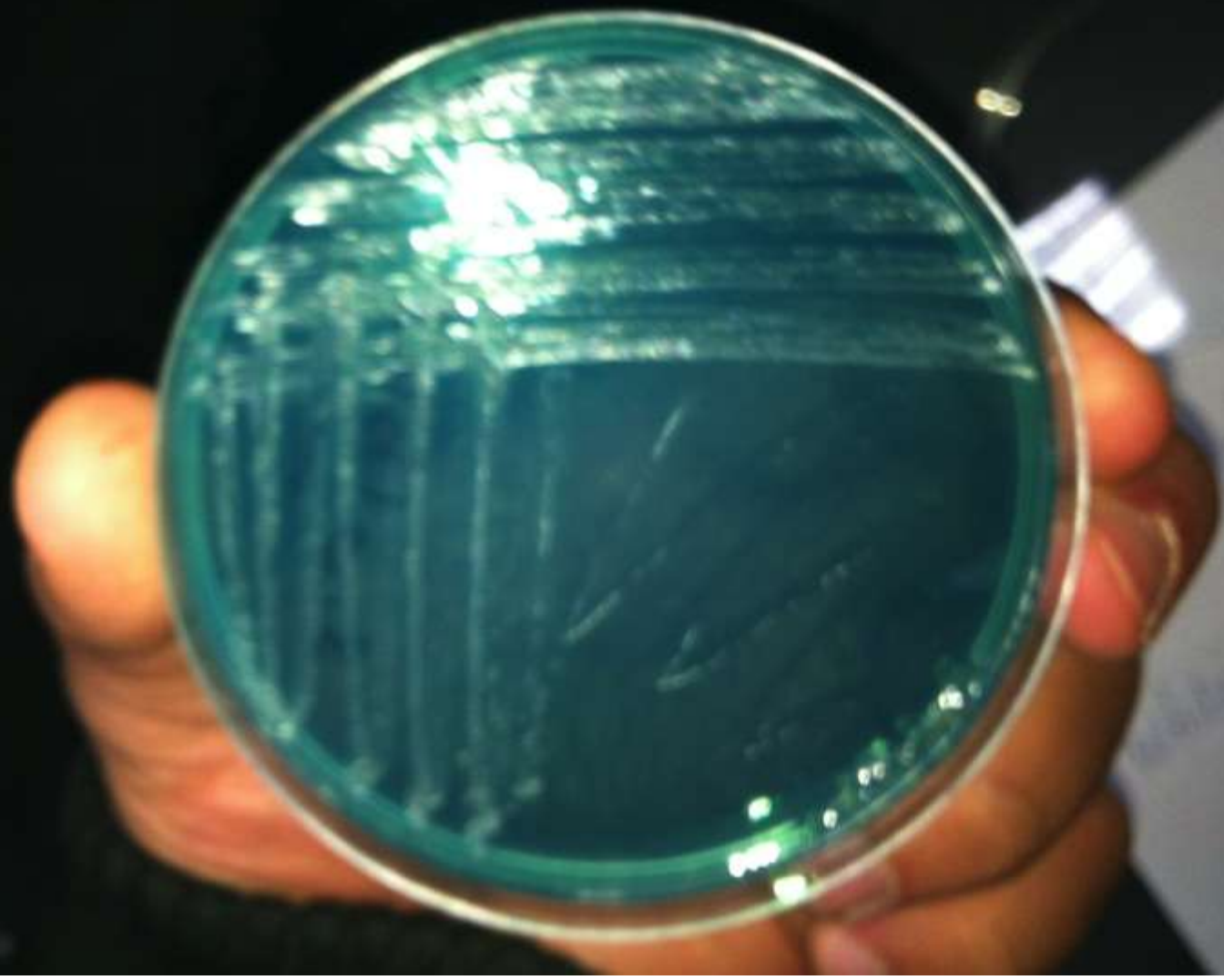


Staphylococcus albus

White Colonies on

CLED Agar Media





Staphylococcus aureus

on CLED Agar

Media



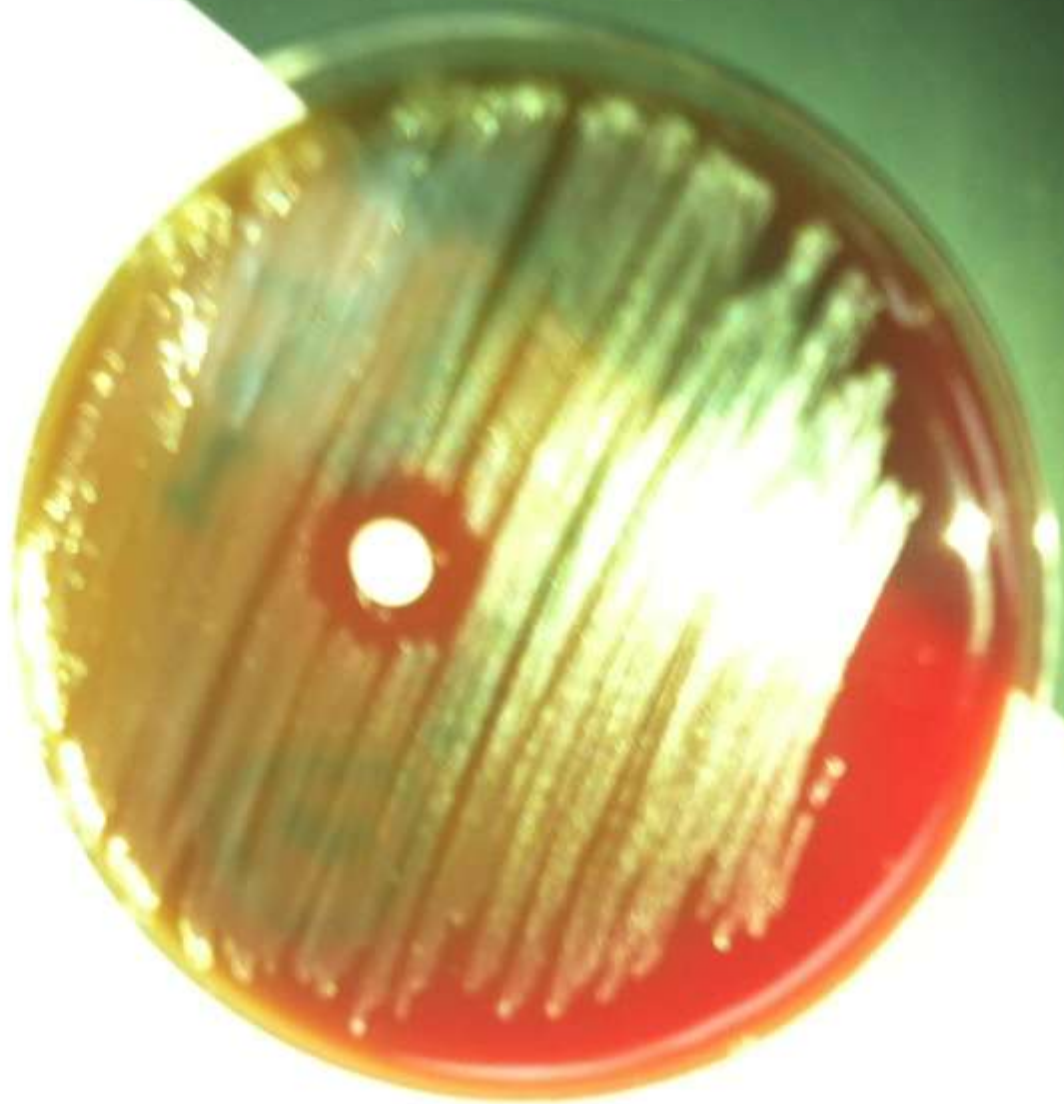


$\beta$ -hemolytic Streptococci

Group A .

Bacitracin Sensitive



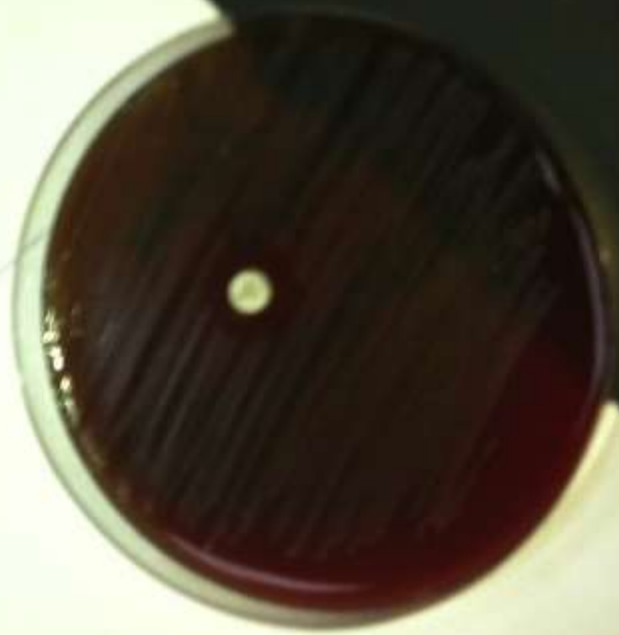




*B.*-hemolytic  
Group A

Streptococci

Bacitracin Sensitive



$\alpha$  - hemolytic Streptococci

Streptococcus pneumoniae  
on Blood Agar

Optochin Sensitive



ronia

Agar

tive -



$\alpha$  - hemolysis

Viridans streptococci

optochin Resistance

ON Blood Agar

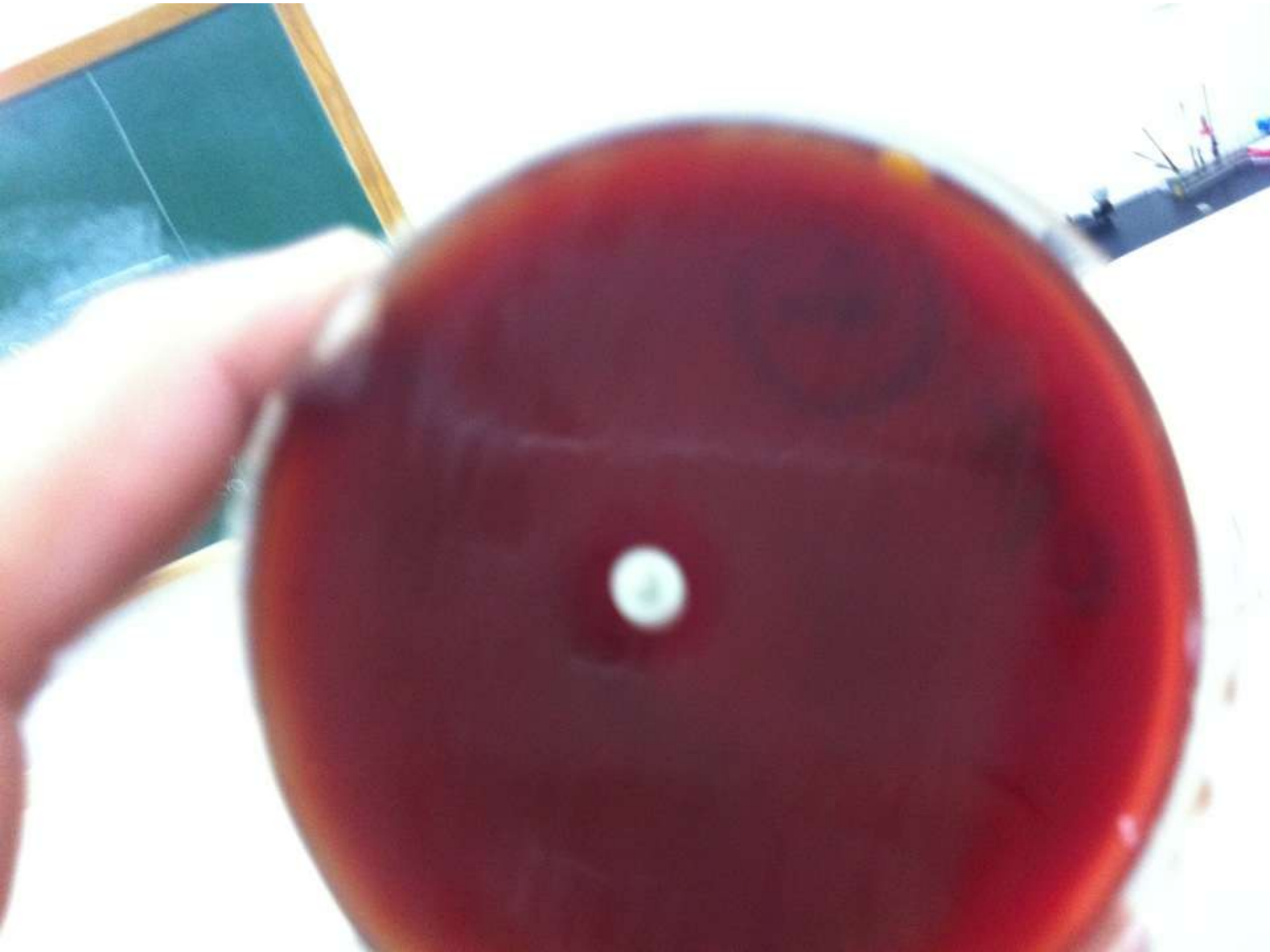












Aspergillus niger

Black Colonies on  
Sabaroud Dextrose Agar





# Penicillium A

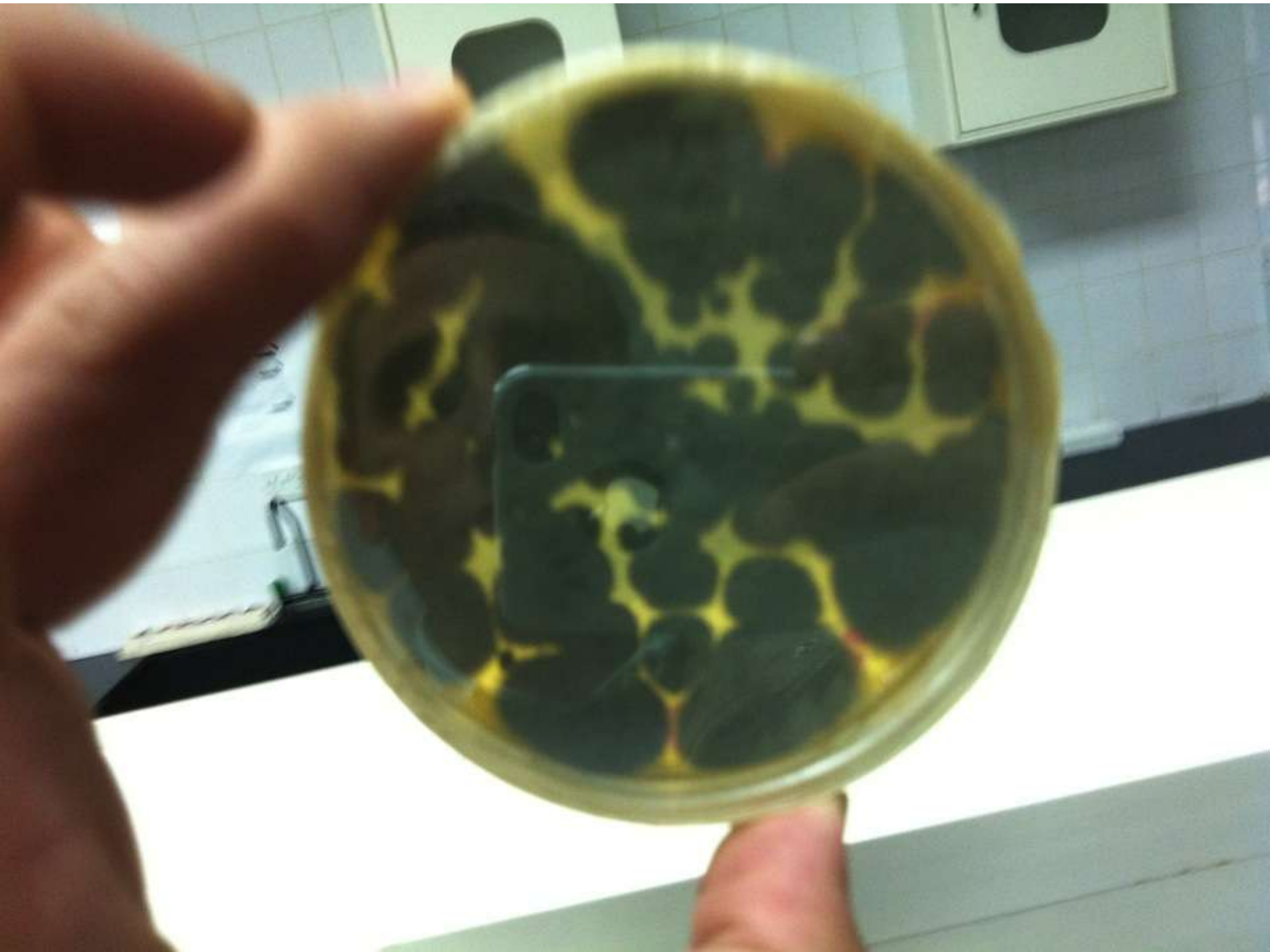
Fungi, Blue colony on

Sabouraud Dextrose Agar









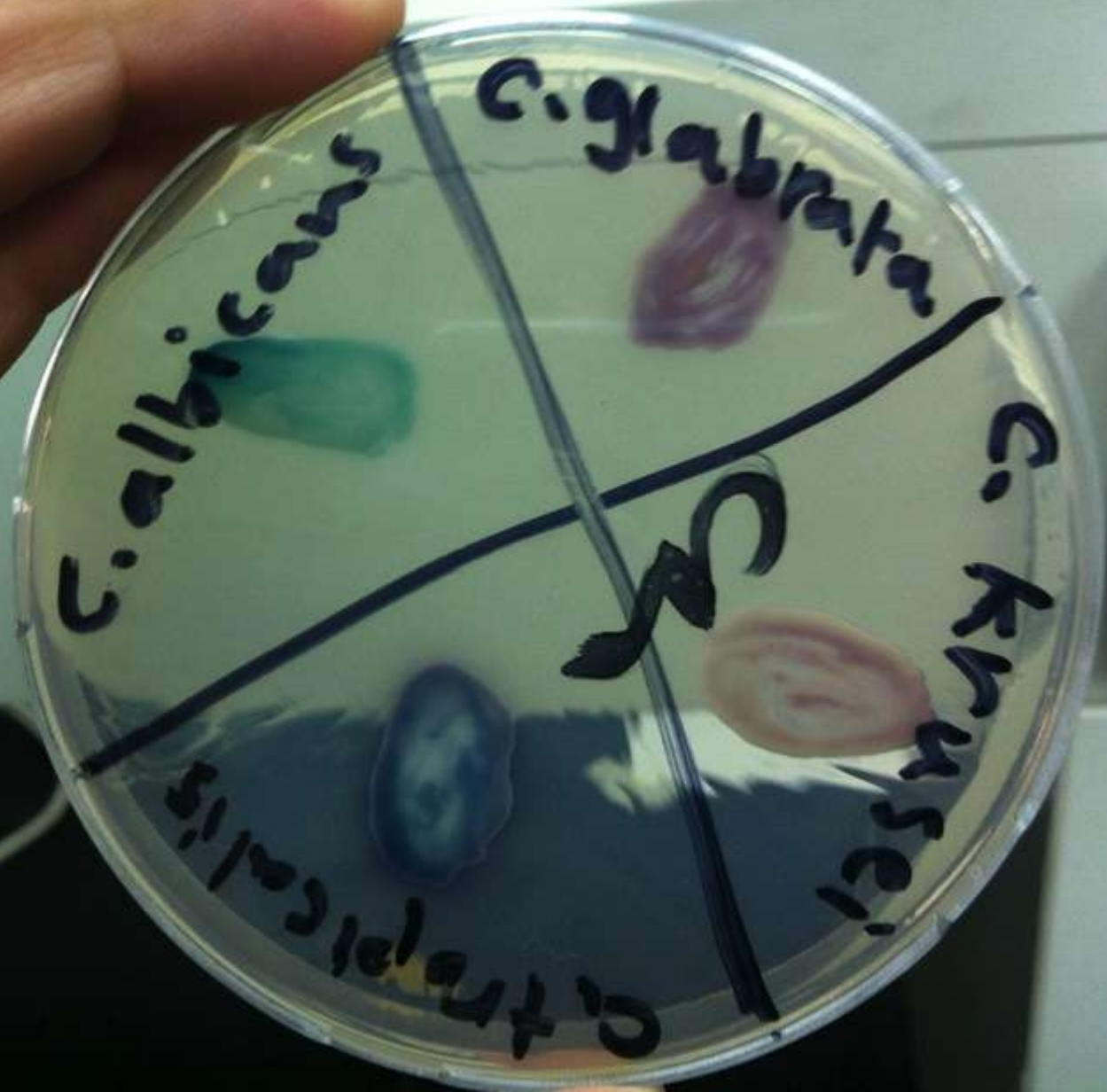


# Candida

ON Chromagar Media :-

- ① Candida albicans : Green Colonies
- ② Candida tropicalis : Blue colonies
- ③ Candida glabrata : pink glistening colonies
- ④ Candida krusei : Light pink dry colonies





*C. albicans*

*C. glabrata*

*C. Krusei*

*C. tropicalis*

S

Candida species

ON Sabaroud Dextrose  
Agar.

Creamy colonies



Candida

Sabouraud Dextrose

agar



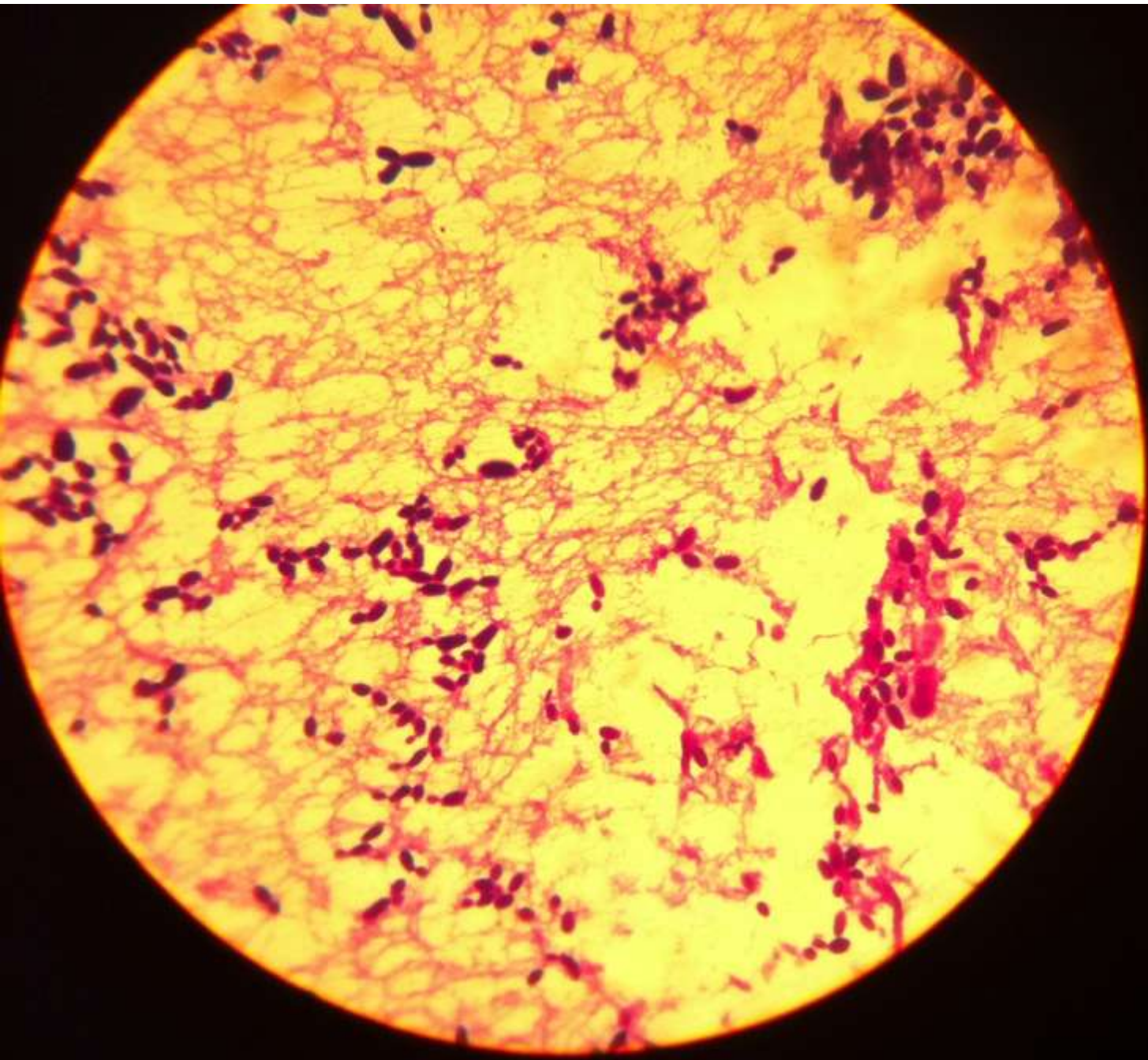
Yeast

Gram stain  $\Rightarrow$

Gram positive oval shape









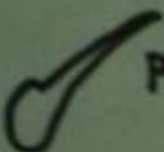
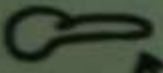
# WET MOUNT

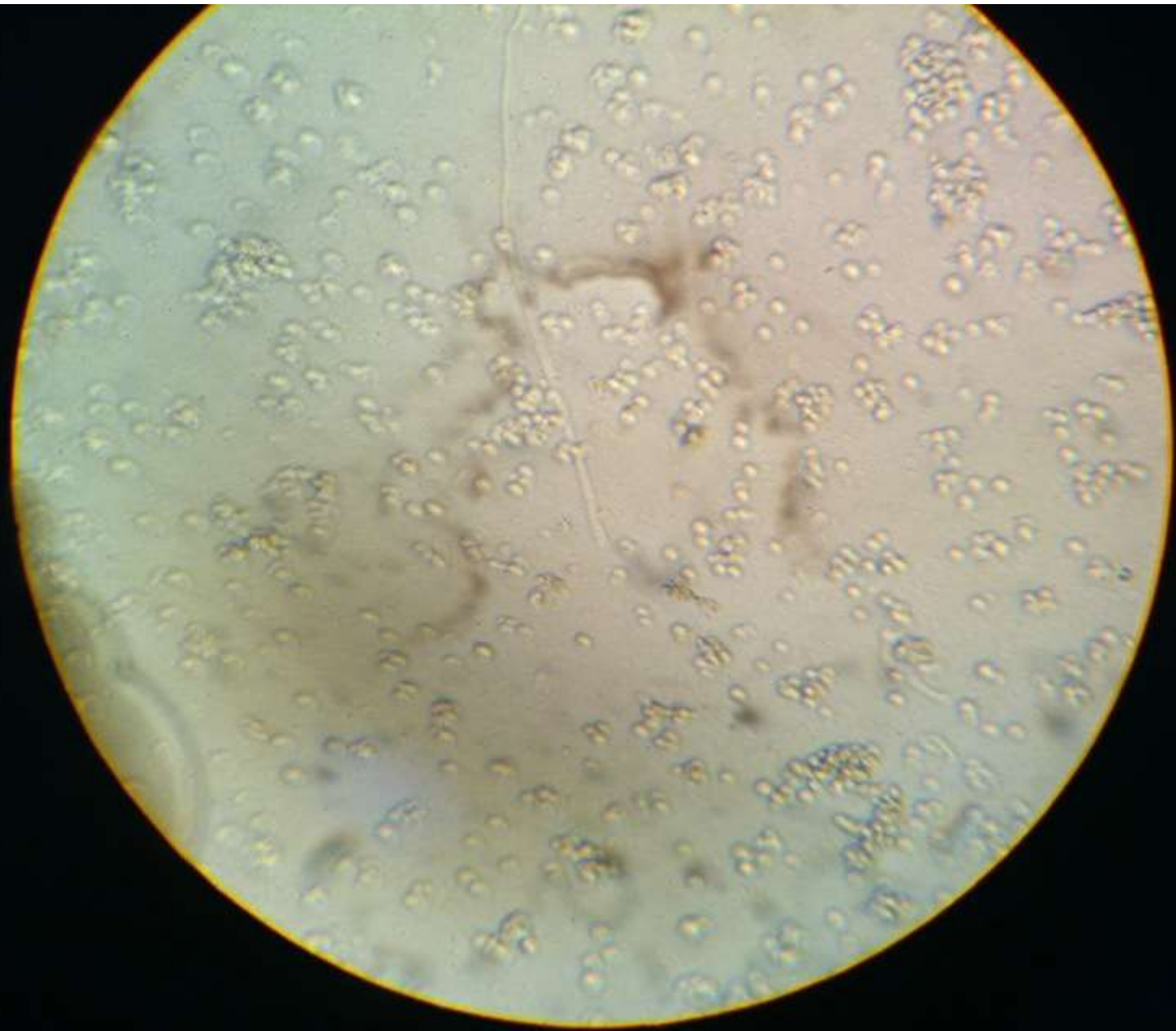
Candida albicans

Germ-tube Test

 + Candida albicans  $\xrightarrow[incubation]{4hr}$

wet Mount

  pseudohyphae  
 ↑ germ tube +





Candida albicans

Germ Tube Test

Colony + Serum  $\xrightarrow[4\text{hrs}]{\text{incubate}}$

Candida

Pseudohyphae  $\rightarrow$



Gram-Stain +

