

# Musculoskeletal Lab

## Exam

22 anatomy lab.  
3 physio lab  
3 skin lab  
2 patho lab.

### Patho Lab

Q1) a irregular dark red-black hemorrhagic mass in a bone  $\Rightarrow$  giant cell tumor

[Picture of hemorrhagic tumor in slides]

Q2) a microscopic picture, what is the tumor  $\Rightarrow$  Osteosarcoma

### Skin Lab

Q3) a picture of stratum granulosum, which of the following is in correct :-

- a- high sulfur content
- b- responsible for keratinization.
- c- important for skin color
- d- granules embedded in keratin.

Q4) a picture of stratum spinosum, which is incorrect :-

- a- have tight junctions.
- b- have keratin content less than stratum basal.
- c- lamellar bodies appear in its upper layers.
- d- ....

Q5) a picture of sebaceous gland, which is incorrect :-

- a- holocrine gland.
- b- function affected by sex hormones.
- c- empty on hair follicle.
- d- " " epidermal surface.



## physio lab

Q6) If you gave a stimulus equal in magnitude with another stimulus previously given to a muscle, in which of the following the muscle will not respond:-

- a- at very early latent period.
- b- at early relaxation period.
- d- at late contraction period.
- c- at late latent period.

Q7) If u heated a container having a muscle then gave a stimulus, what is the effect.

- a- contraction with a high force than normal.
- b- " " a lower " " "
- c- no effect.
- d- --

Q8) latent period is

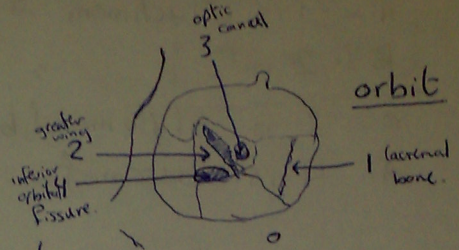
⇒ the time between giving a stimulus and initiation of muscle contraction.



# atomy lab

Q9) which is wrong :-

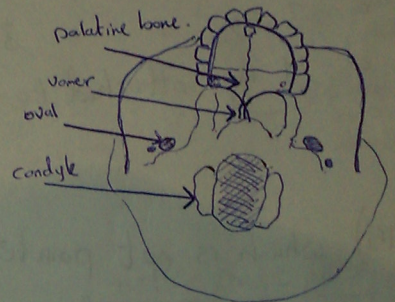
- a- 1 is lacrimal bone.
- b- 2 is greater wing of sphenoid.
- c- 3 is foramen from which ophthalmic artery enter.
- d- 4 is foramen from which oculomotor nerve enter.



Q10) which of the following is not pointed in picture :-

- a- palatine bone
- b- vomer
- c- foramen for exit of mandibular nerve
- d- area for nodulation the age of the skull

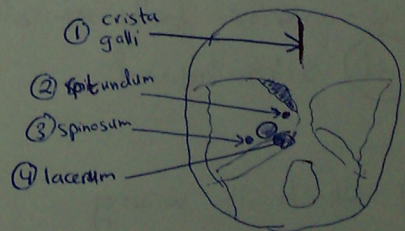
base of skull



Q11) which is wrong.

- a- 1 is attachment of Falx cerebri
- b- 2 is exit of mandibular nerve
- c- 3 is entry of middle meningeal artery
- d- 4 is entry of internal carotid artery

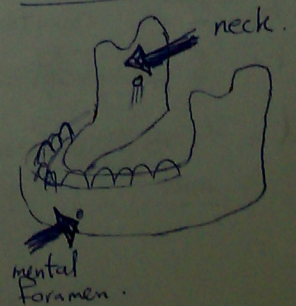
norma basalis interna



Q12) which is not related to the pointed structures :-

- a- ariculotemporal nerve
- b- maxillary artery
- c- mental artery
- d- inferior alveolar artery

mandible



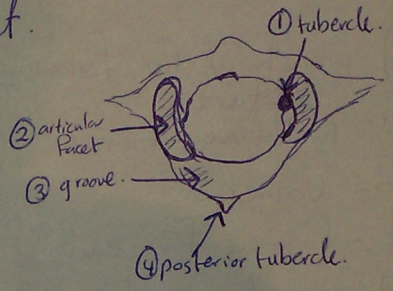


- Q13) which is wrong
- a - 1 is attachment of medial pterygoid.
  - b - 2 is " " masseter.
  - c - 3 is stylo mandibular ligament.
  - d - 4 is buccinator.



- Q14) which is wrong
- a - 1 is attachment of transverse ligament.
  - b - 2 is related to synovial pivot joint
  - c - 3 is " " 3rd part of vertebral artery.
  - d - 4 is attached to ligamentum nuchae.

atlas superior view



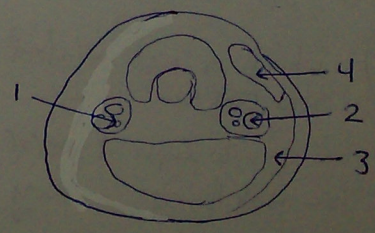
- Q15) which is not pointed in the picture.
- a - sternomastoid muscle.
  - b - masseter
  - c - anterior belly of digastric.
  - d - sterno hyoid.

muscle of neck (lateral view)

netter plate 26

- Q16) which is wrong
- a - 1 is vagus nerve.
  - b - 2 is carotid artery.
  - c - 3 is posterior triangle.
  - d - 4 is sternomastoid muscle.

cross section in neck





7) identify the following vertebrae

- a- ... lumbar
- b- ... cervical.
- c- typical thoracic
- d- first thoracic

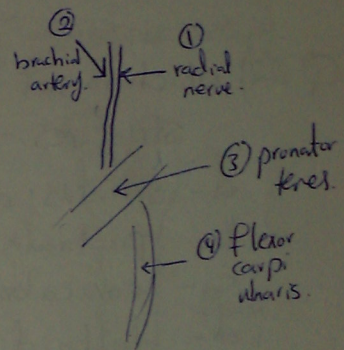
netter  
plate 151

[T6 picture]

18) which is wrong.

- a- 1 is ulnar nerve.
- b- 2 is brachial artery.
- c- 3 is pronator teres.
- d- 4 is flexor carpi ulnaris.

netter plate 434



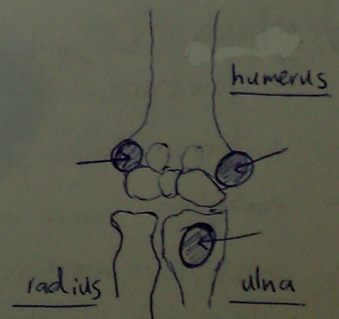
19) which is not pointed in the picture.

- a- teres minor.
- b- axillary nerve.
- c- radial nerve.
- d- long head of triceps.

netter plate 465

20) which is not attached to the pointed structures:-

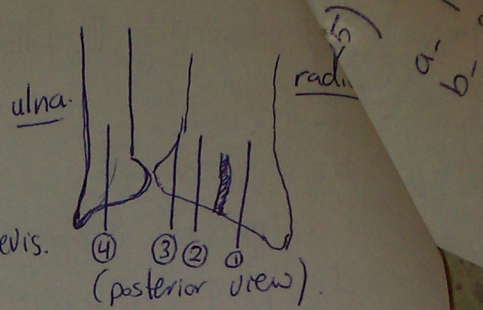
- a- brachialis.
- b- flexor carpi ulnaris.
- c- extensor digitorum.
- d- supinator.





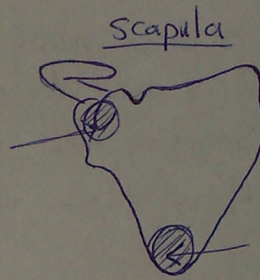
Q21) a question about structures in the compartments below extensor retinaculum :-  
which is wrong :-

- a- 1 is extensor carpi radialis longus and brevis.
- b- 2 is extensor pollicis longus.
- c- 3 is extensor digiti minimi
- d- 4 is extensor carpi ulnaris.



Q22) which is not related to the pointed structures :-

- a- serratus anterior
- b- pectoralis minor
- c- coracobrachialis.
- d- deltoid.



Q23) which is wrong

- a- 1 is extensor indicis
- b- 2 is extensor pollicis brevis.
- c- 3 is extensor pollicis longus.
- d- 4 is extensor carpi ulnaris.

netter plate 429 (right) pic

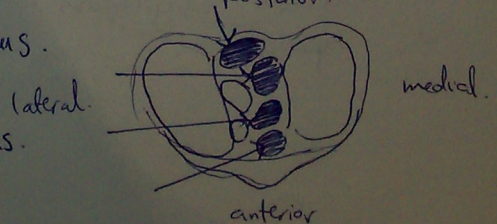
→ it was pointed to abductor pollicis longus.

Q24) which is not pointed in the picture.

- a- anterior meniscus
- b- anterior horn of medial meniscus.
- c- posterior meniscus.
- d- posterior horn of lateral meniscus.

netter plate 496

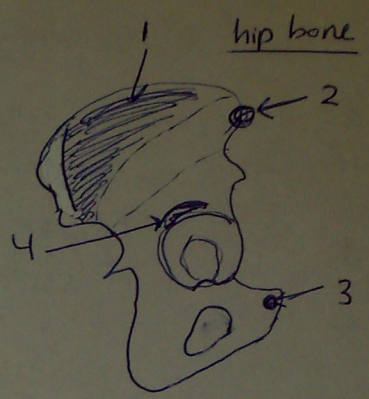
lower picture  
posterior.





radius - 5) which is wrong :-

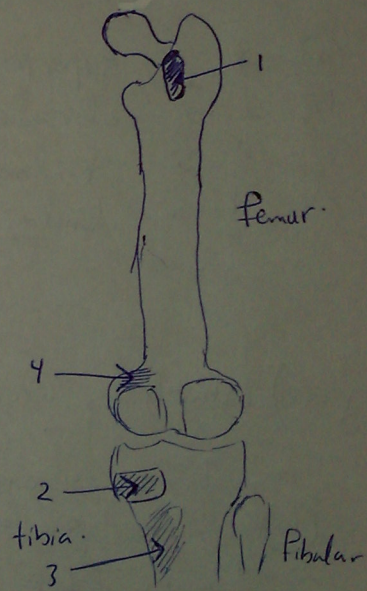
- a- 1 is gluteus medius.
- b- 2 is iliofemoral ligament
- c- 3 is rectus femoris
- d- 4 is adductor brevis.



Q 26) which is wrong :-

- a- 1 is quadratus femoris.
- b- 2 is semitendinosus.
- c- 3 is popliteus.
- d- 4 is medial head of gastrocnemius

[posterior view]



[Posterior view]

Q 27) which is wrong :-

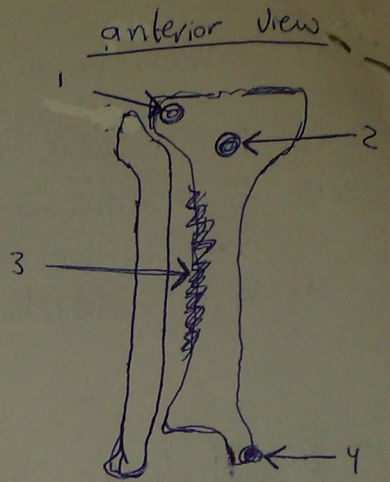
- a) 1 is short head of biceps. → was pointed to long head.
- b- 2 is piriformis.
- c- 3 is gluteus minimus.
- d- 4 is popliteal artery.

netter plate 490



Q28) which is wrong

- a- 1 is tibial collateral ligament
- b- 2 is ligamentum patellae.
- c- 3 is tibialis anterior
- d- 4 is deltoid ligament.



Q29) which is wrong

- a- 1 is superficial peroneal nerve. → was pointed to deep peroneal nerve.
- b- 2 is dorsalis pedis artery.
- c- 3 is tendon of extensor digitorum longus.
- d- 4 is tendon of extensor hallucis longus.

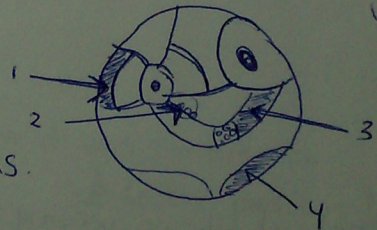
netter plate 518

Q30) which is wrong

- a- 1 is peroneus longus
- b- 2 is posterior tibial vessels.
- c- 3 is flexor digitorum longus.
- d- 4 is medial head of gastrocnemius.

netter plate 510

cross section in leg.



Done

2009 2935