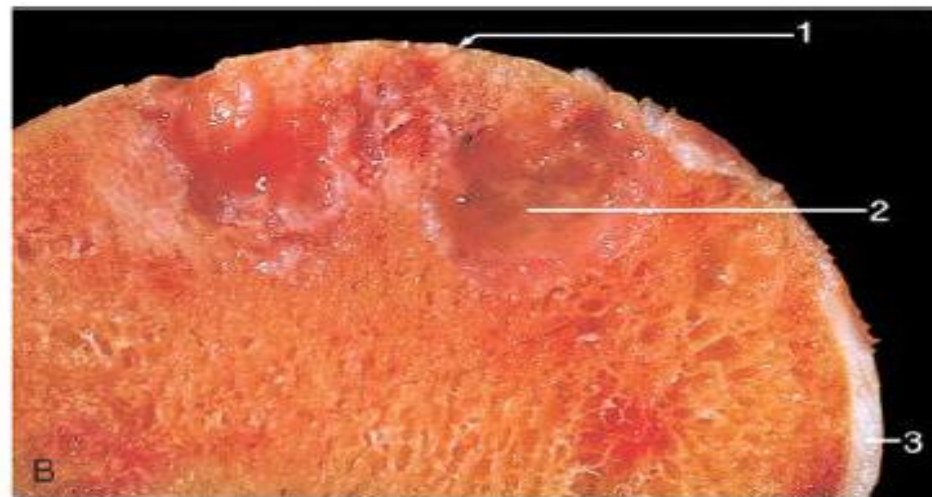
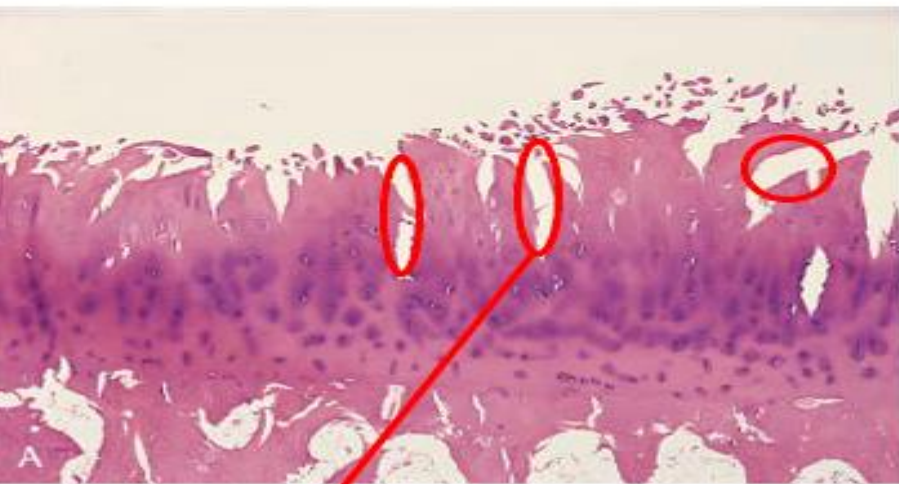


Pathology Lab

MSS

Lecture 4

التهاب المفاصل Osteoarthritis



© Elsevier. Kumar et al: Robbins Basic Pathology 8e - www.studentconsult.com

- Osteoarthritis. **A**, Histologic demonstration of the characteristic fibrillation of the articular cartilage. **B**, Severe osteoarthritis with 1, Eburnated articular surface exposing subchondral bone. 2, Subchondral cyst. 3, Residual articular cartilage

Gout النقرس



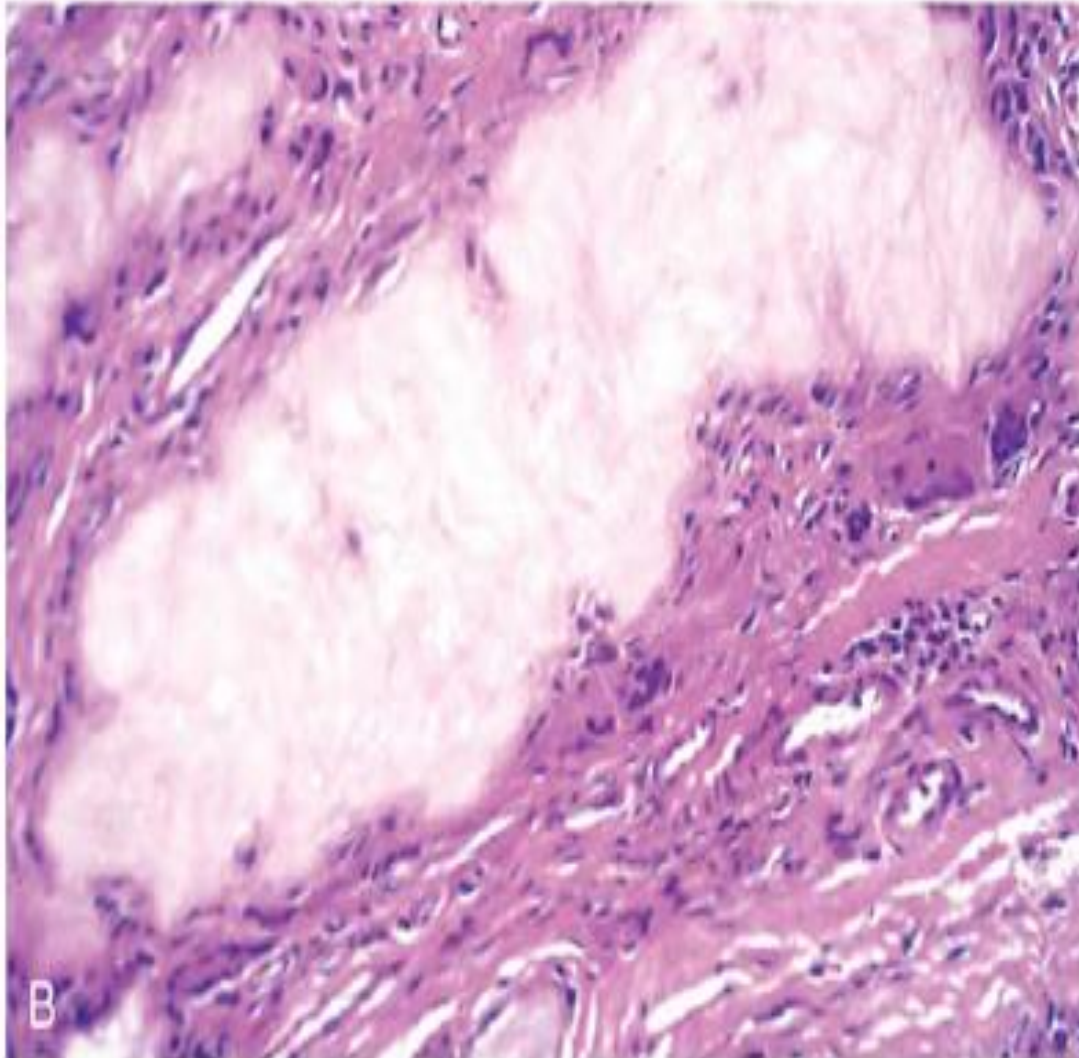
Gout occurs most commonly in the great toe.

- This is an amputated great toe. You can clearly see the tophi in the joint and soft tissues.

Tophi in soft tissues = tophi in the tendons, ligaments .. Etc.

- Tophi (حصوات النقرس)
large aggregation of uric acid crystals, and since these tophi are associated with chronic gouty arthritis, they are surrounded by lymphocytes, macrophages, and foreign-body giant cells.

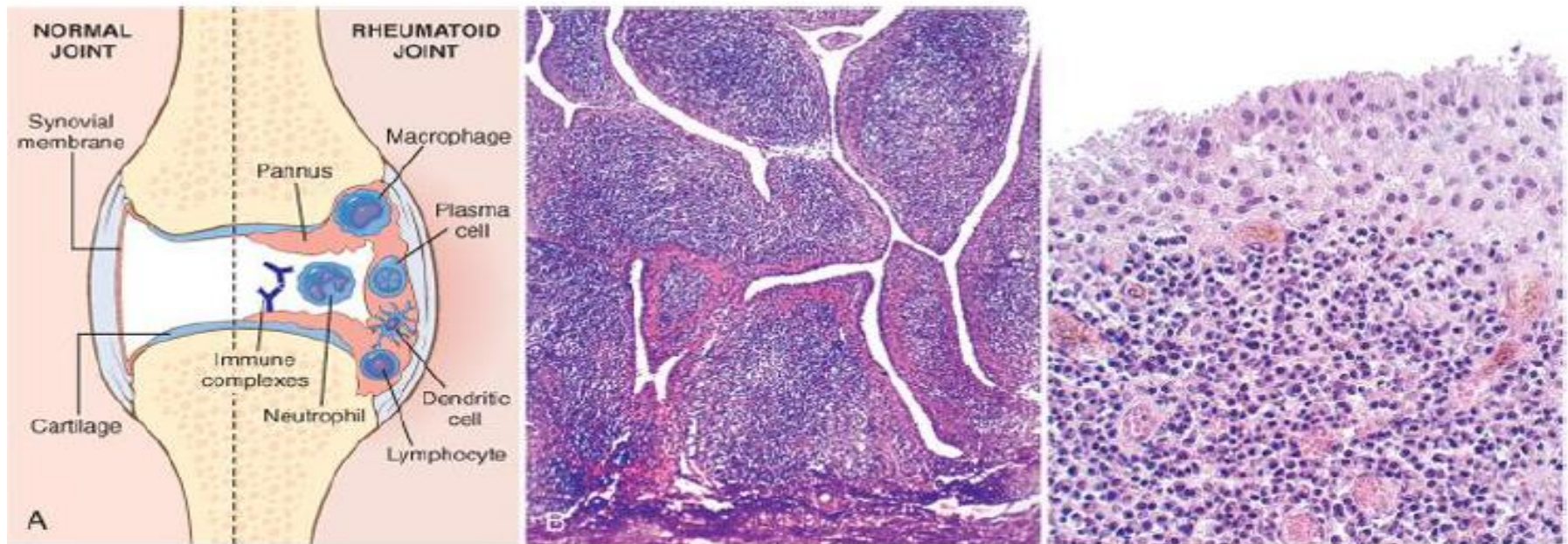
Gout



This is a histological section of a gouty tophus.
- It appears under the microscope as an amorphous material surrounded by inflammatory cells (macrophages, lymphocytes and foreign-body giant cells).

Note: Foreign-body giant cells = Giant cells formed in response to a foreign body (uric acid crystals in this case).

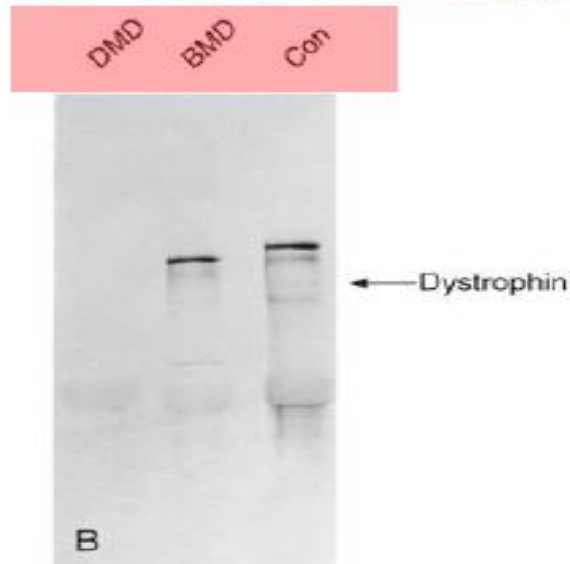
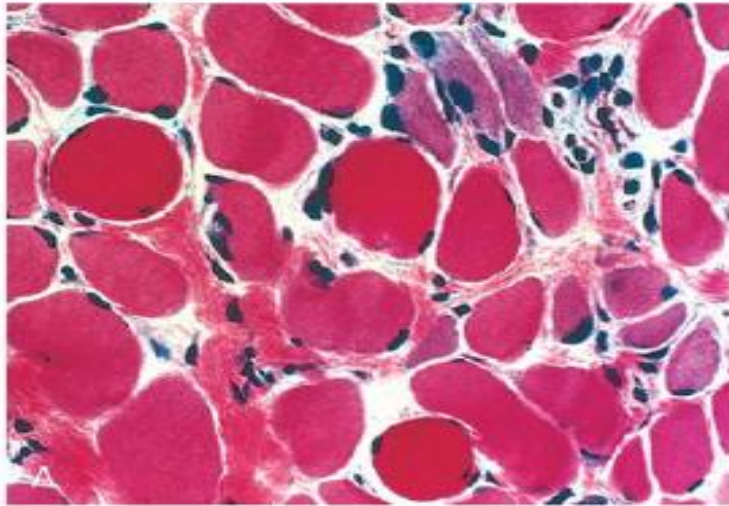
Rheumatoid Arthritis



© Elsevier. Kumar et al: Robbins Basic Pathology 8e - www.studentconsult.com

- Rheumatoid arthritis. **A**, A joint lesion. **B**, Low magnification reveals marked synovial hypertrophy with formation of villi. **C**, At higher magnification, dense lymphoid aggregates are seen in the synovium

Muscular Dystrophy



- **A**, Duchenne muscular dystrophy (DMD) showing variation in muscle fiber size, and regenerating fibers (*blue hue*). **B**, Western blot showing absence of dystrophin in DMD and altered dystrophin size in Becker muscular dystrophy (BMD) compared with control (Con)